

Our seed mixes aren't just for groundcover

Teller-Park Conservation District has worked with experienced soil conservationists and seed professionals to create seed blends that provide ground cover to prevent erosion control and palatable forage for cattle. These seed blends also enhance functionality of biological systems in our two counties.

You may find that some seed mixes on the market include species that are poorly adapted to our environment or worse, they include species that are invasive and take over native grass stands.

The seed mixes we sell are comprised of native species and non-invasive introduced species—and all are adapted to the unique climate and altitude of Teller and Park Counties.

Additional benefits

Grass stands sown with these seed blends have the added benefit of resilience and will withstand the harsh conditions that can be common to this area. These grasses also provide suitable forage and necessary cover for wildlife of the Pikes Peak region.

A Word about Native Species

Native species are adapted to local seasons, droughts, fire, etc. and may lead to greater survival than introduced species. Native species are better for birds, pollinators, and other insects and wildlife. Wildlife—big and tiny—requires a healthy, functional biological system.

About TPCD

The Teller-Park Conservation District was formed in 1942.

As one of nearly 3000 conservation districts nationwide, we are helping people conserve land, water, forests, wildlife and related natural resources. We share a single mission to coordinate assistance from public, private, local, state, and federal partners to develop locally driven solutions for natural resource concerns.

Education is a vital part of our mission. We participate in local events and conduct workshops talking to folks about conservation topics, such as noxious weeds. We also provide

education programs for school children and adults. Stop by our office for more information and to purchase custom seed mixes for native pasture, rangeland restoration, and pollinator-friendly wildflowers—seed mixes specific to our altitude and growing conditions.

Teller-Park Conservation District

PO Box 2027
800 Research Drive, Suite 160
Woodland Park, CO 80863

Phone

(719) 472-3671

Email

tellerparkcd@gmail.com

tellerparkcd.org

USDA is an equal opportunity provider, employer, and lender.



2023

Grass & Wildflower Seed Mixes

We live, we die, and like the grass and trees, renew ourselves from the soft earth.

Chief Joseph, Nez Perce
1840-1904

Office Hours:

Tuesday thru Thursday 8:00 am – 4:00 pm



Teller-Park Conservation District

Buffalo Brand Low Grow Mix

Rate: 15-25 lb. /acre OR 1-2 lb. per 1000 sf

\$30.00 / 5 Lb. Bag

SI	28.22%	Crested Wheatgrass
BI	24.93%	Ryegrass
BI	14.91%	Sheep Fescue
SI	14.89%	Chewings Fescue
BI	14.12%	Upland Bluegrass

This is a quick establishing mix of cool season grasses for use in most any soil type. Lower growing grasses for minimal mowing.

BN = Bunch-forming, Native
SN = Sod-forming, Native
BI = Bunch-forming, Introduced
SI = Sod-forming, Introduced



Streambank Wheatgrass



Sheep Fescue



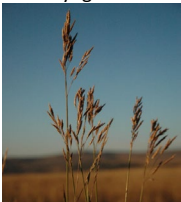
Ryegrass



Siberian Wheatgrass



Crested Wheatgrass



Mountain Brome

Buffalo Brand Foothills Mix

Rate: 14-20 lb. /acre

\$41.50 / 5 Lb. Bag

BN	19.63%	Streambank Wheatgrass
BI	19.61%	Annual Ryegrass
BN	19.29%	Thickspike Wheatgrass
BN	14.91%	Mountain Brome
BN	14.52%	Siberian Wheatgrass
BN	9.96%	Green Needle

This productive and palatable seed blend is ideal for grazing or soil stabilization. This mixture was created to suit higher and drier environments.

Buffalo Brand Dryland Pasture Mix

Rate: 20-35 lb. /acre

\$125.00 / 25 Lb. Bag

BI	19.20%	Tetraploid Per Ryegrass
BI	19.13%	Orchardgrass
BN	19.06%	Siberian Wheatgrass
BN	18.75%	Smooth Brome
BN	9.92%	Intermediate Wheatgrass
BN	9.81%	Streambank Wheatgrass

This productive and palatable mix of non-invasive grasses is suitable for grazing or where high biomass is needed for soil stabilization.

Prices include 8.49% sales tax

Buffalo Brand Mountain Wildflower Mix

Rate: 6-12 lb. /acre OR 4 oz. per 1000 sf

\$38.00 / 1 Lb. Bag

Mountain Mix: California Poppy (orange), Siberian Wallflower, Baby's Breath Annual, Blanketflower, Blue Flax, Dwarf Blue Cornflower, Polka Dot Mix Cornflower, Rocky Mountain Penstemon, Dwarf Godetia, Catchfly, Blue Columbine, Shasta Daisy, Daisy Fleabane, Tussock Bellflower, Black-eyed Susan.

All suggested rates are for broadcast method and are determined by soil condition, soil preparedness, and planting purpose.



Blue Flax



Poppy



Penstemon



Cornflower



Black-eyed Susan



Blue Columbine